

Case Study

Berlin Brandenburg Airport Willy Brandt



KUSCH+CO
by Nowy Styl



„Wenn ich sagen soll, was mir neben dem Frieden
das Wichtigste sei, dann lautet meine Antwort: Freiheit.“
"If I were asked to say what, apart from peace, was
important to me, then my answer would be freedom."

Berlin Brandenburg Airport Willy Brandt

The German capital's new airport, which is resourced with a total of two parallel runways and three terminals, went operational in autumn 2020 when the south runway was commissioned. The airport can currently handle 46 million passengers a year, and planned extensions are intended to increase that figure in the future.



Lounge Tegel and Lounge Tempelhof, named after Berlin's former airport locations, serve as international models for the modern design of business lounge facilities. To furnish them, the airport opted for good reason to partner with Kusch+Co. The furniture's premium design, supreme quality and imaginative

details appealed on the one hand, while it met stringent fire prevention standards and the particular hygiene requirements caused by the pandemic on the other. An exceptional interiors concept was created in close cooperation with Berlin-based firm of architects Synarchitects.



Berlin Brandenburg Airport Willy Brandt

Elegance and comfort

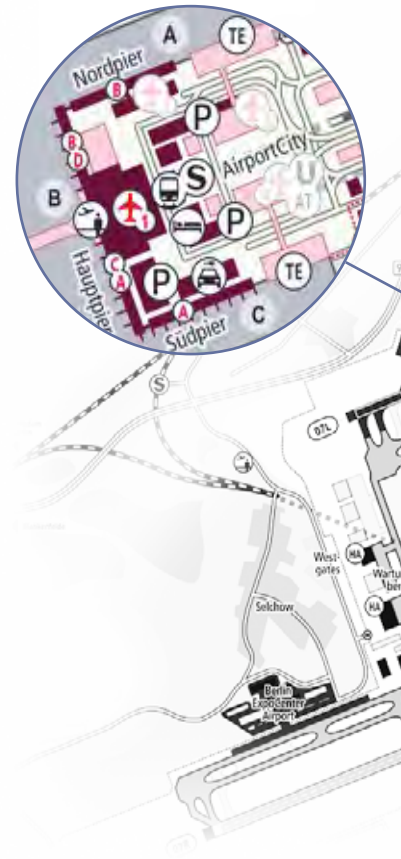
Kusch+Co's multifaceted product diversity, its fire prevention and hygiene expertise, as well as its experience of furnishing more than 260 airports worldwide were the ideal prerequisites for successfully turning design into reality. Nine different seating series and four table series, which enabled the desired atmosphere of modern elegance and comfort to be created, were used to action this project. Furnishing centrepiece is the compact, comfortable Creva soft series, which in addition to its wide range of different screened-off and open seating versions also provides power and data options and extra storage space. This enables very varied seating arrangements to be configured. And the new edition of the lounge chair TV-relax, which was designed for Kusch+Co in the 1960s by Prof. Luigi Colani, demonstrates just how well genuine furniture classics can be integrated into a project of this kind.



Fire prevention and hygiene

As far as fire prevention is concerned, all the furniture supplied was manufactured in line with Kusch+Co's Fire Prevention Concept. Additional fire prevention tests were specially conducted in the laboratory on the individual materials and fabrics used for each series. For example, the seating is equipped with a nonflammable fabric layer between the upholstery and outer fabric or features a premium, flame-retardant leather. A concept that meets the four essential fire prevention objectives: the seating is self-extinguishing, reduces the smoke development, prevents an incipient fire from spreading out and does not turn into an additional ignition source. And the surface finishes on many items of furniture have been engineered not only to make them easy to clean, but also enable them to be safely disinfected and therefore meet the latest preventive hygiene requirements. Table tops featuring an antibacterial finish, which to some extent automatically eliminates the undesirable microorganism left on the surface after being touched by human hands, were used.

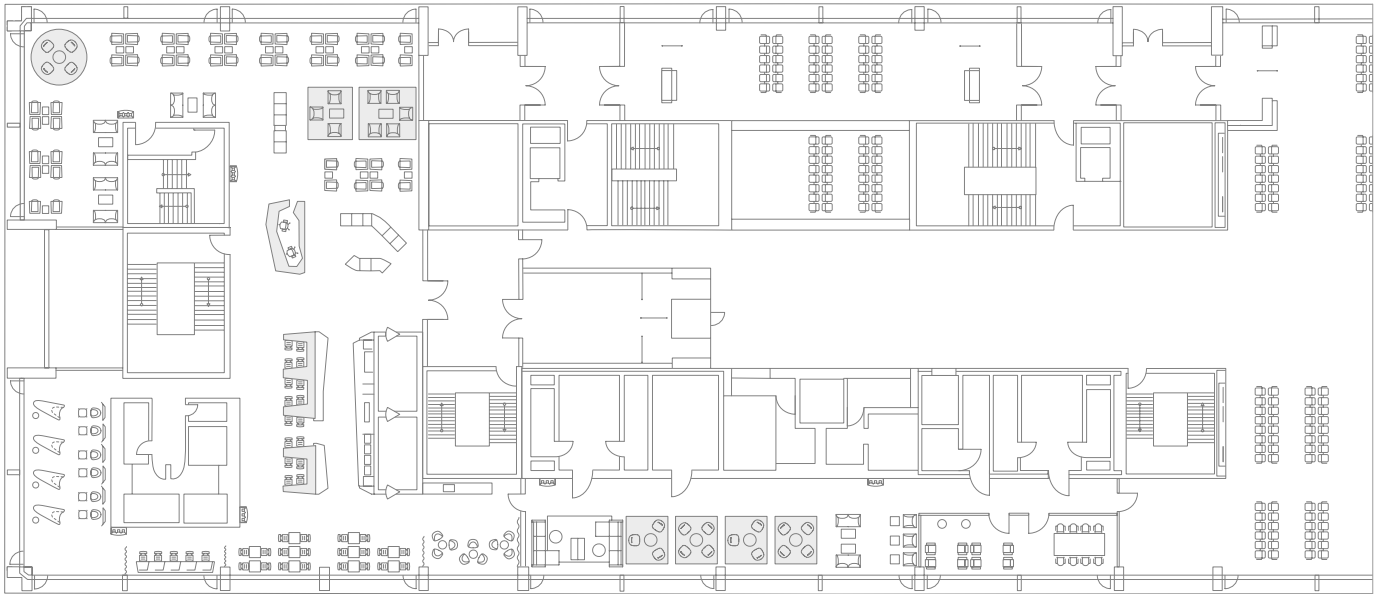
Berlin Brandenburg Airport Willy Brandt



Integrated design concept for both lounges in Terminal 1

Lounge Tempelhof, which covers 910 sqm and seats around 200, is located near the Schengen gates in the Main Pier South, one level up from the Departures Hall. Lounge Tegel, which covers 600 sqm and seats around 180, is located on the same level in the Main Pier North.

The design concept is based on the zoning of different applications like reception, lounge and dining areas, quiet zones and conference rooms, which each feature separate use of materials and colours. It adapted the colour concepts used in the former Tempelhof and Tegel airports and incorporated them in a contemporary environment.



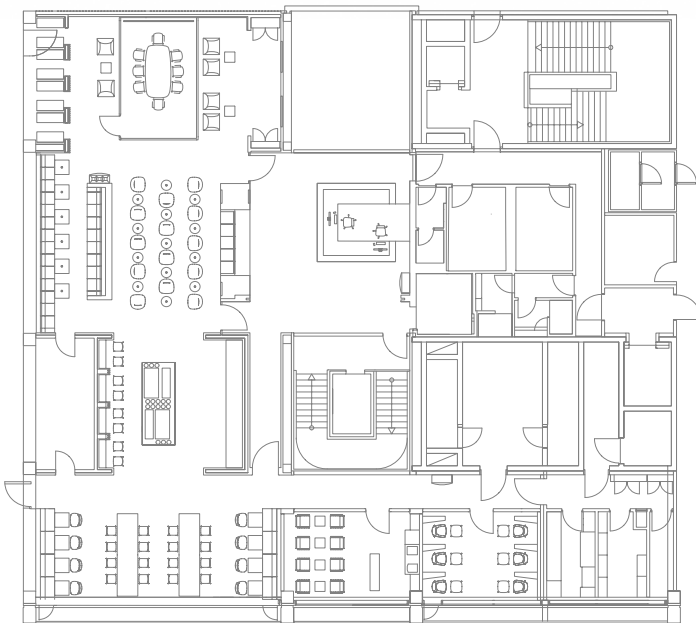
Lounge Tempelhof



© Thomas Polimann



© Wikipedia: CellarDoor65 (Robert Aehmel)



Lounge Tegel







Berlin Brandenburg Airport Willy Brandt



Be it screened-off single seats offering privacy or open single- or two-seaters – with Creva soft anything is possible.



Herzlich willkommen
in der Lounge Tempelhof
Welcome to Lounge Tempelhof

Berlin Brandenburg Airport Willy Brandt



Seating arrangements, consisting of armchairs series 8200 Volpe and tables series 8700 that are fixed to the floor.



Ergonomic task chairs 6000 São Paulo at the reception counter.



Series 7900 Creva soft: screened-off berths for small groups, in front of these are individual seats with practical integrated tops, beneath which a trolley case can be conveniently stowed.

Willkommen am Flughafen Berlin-Brandenburg
Welcome to Berlin-Brandenburg Airport

BER FLUGHAFEN
BERLIN
BRANDENBURG







This great view is an appealing sight: upholstered armchairs with matching stools to let users take the weight off their feet from the 8600 Lupino series and lounge chairs TV-relax from the 9900 Colani Collection.

Berlin Brandenburg Airport Willy Brandt





A view of a conference room featuring a table series 6000 san_siro and swivel armchairs 2100 uni_verso.



Dining area furnished with chairs series 2100 uni_verso and tables series 8700.





Sound-insulated conference room featuring a table series 9550 Comta and swivel armchairs 2100 uni_verso. In front of it is a gaming area furnished with armchairs series 7900 Creva soft.

Berlin Brandenburg Airport Willy Brandt





The dining area in a warm, feel-at-home wood finish, contrasting with the bar stools series 2100 uni_verso at the counter, which are entirely in white.



Smokers' lounge offering classic seating comfort: series 5070 Vega armchairs and series 8700 tables.



Ideal for informal communication, the high table series 9550 Comta, which features a large table top overhang, provides plenty of legroom and freedom of movement. A table at which you can stand or sit comfortably on bar stools series 2100 uni_verso.



The ergonomically healthy way to sit at a counter – on task chairs series 6000 São Paulo.

Berlin Brandenburg Airport Willy Brandt



Gate A31 waiting area in the South Pier furnished with benches series 8300 V-Travel.

31

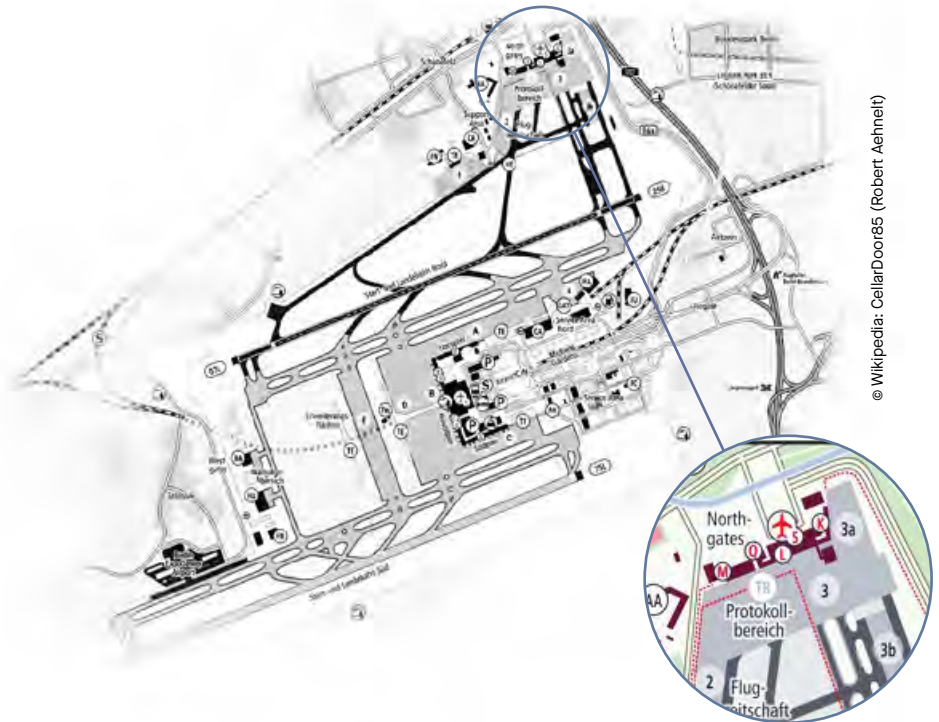


Berlin Brandenburg Airport Willy Brandt

Departures and Arrivals Hall Terminal 5

Open and welcoming waiting area furnished with around 730 seating units from the 8300 V-Travel series, featuring easy-care, disinfectable PU seat shells in a plain grey colour. Each seat is anatomically shaped, comfortable and the backrest provides a little bit of rebound. These dovetail with the lounge atmosphere created by the permanently installed benches in a warm shade of red.

Directly integrated into benches: seats featuring a slightly higher seat surface for passengers with reduced mobility (PRM).



© Wikipedia: CellarDoor85 (Robert Aehnelt)



© Günter Wicker



Photo above and right © Thomas Pellmann



09/2021 EN Subject to technical modifications / colour variations
Photo cover © Günter Wlecker

Kusch+Co GmbH
P.O. Box 1151
59965 Hallenberg
Germany

T +49 2984 300-0
welcome@kusch.com
kusch.com